

DIN
6499

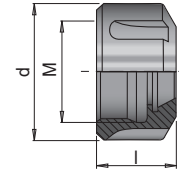
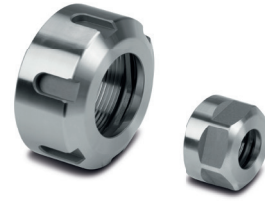
G 2.5
25000 min⁻¹

PRODUCT DESCRIPTION

» Thread and taper ground in one clamping

APPLICATION

» Compatible for HZW HWZ 1119 and HWS 2219



d	l	M	ER	No.	EUR
28	17.5	M22 x 1,5	16	HWZ 9719/16	< >
42	20	M32 x 1,5	25	HWZ 9719/25	< >
50	22.5	M40 x 1,5	32	HWZ 9719/32	< >
63	25.5	M50 x 1,5	40	HWZ 9719/40	< >